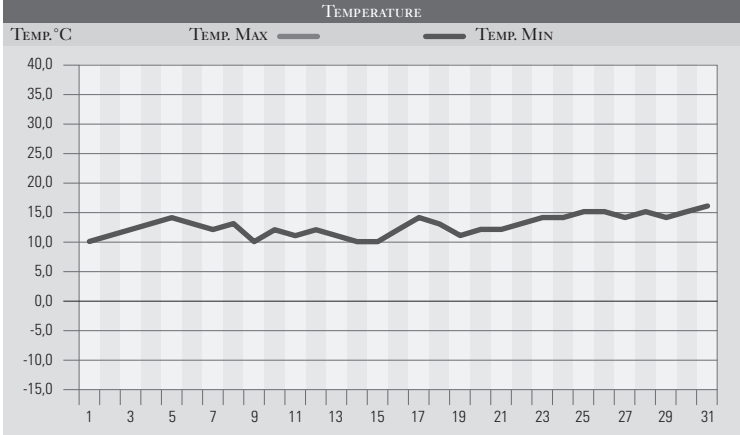


MAGGIO 1976

GIORNO	T.MIN	T.MAX	PREC.(mm)	OSSERVAZIONI
1	10,0	15,0		Nuvoloso, freddo
2	11,0	17,0	7,0	Variabile, pioggia-rovescio
3	12,0	23,0		Variabile, sereno, temperature in aumento
4	13,0	25,0		Sereno, sensibile aumento della temperatura
5	14,0	26,0		Sereno, velato, caldo quasi afoso
6	13,0	27,0		Variabile, caldo per correnti africane
7	12,0	23,0		Variabile
8	13,0	21,0		Nuvoloso, freddo
9	10,0	17,0	8,0	Molto nuvoloso, piogge-temporale
10	12,0	18,0	25,0	Variabile, violentissimo temporale con grandine
11	11,0	19,0		Nuvoloso (gravissimi i danni della grandinata)
12	12,0	20,0	2,0	Nuvoloso, piogge sparse
13	11,0	21,0		Poco nuvoloso
14	10,0	22,0		Sereno
15	10,0	24,0		Sereno
16	12,0	25,0		Sereno
17	14,0	24,0		Sereno
18	13,0	25,0		Sereno
19	11,0	25,0		Lento peggioramento, nuvoloso
20	12,0	21,0	20,0	Nuvoloso, coperto, piogge anche intense
21	12,0	21,0		Poco nuvoloso
22	13,0	22,0		Poco nuvoloso, miglioramento deciso
23	14,0	23,0		Bel tempo, sereno
24	14,0	25,0		Sereno, temperature in crescita
25	15,0	26,0		Sereno
26	15,0	26,0		Sereno
27	14,0	26,0		Sereno
28	15,0	27,0		Sereno
29	14,0	27,0		Sereno
30	15,0	28,0		Poco nuvoloso
31	16,0	28,0		Sereno, poco nuvoloso
MED.TOT.	12,7	23,1	62,0	



RIEPILOGO		
GIORNI DI PIOGGIA	5	Nella parte centrale del mese vi è stata una notevole tur-
TEMPERATURE MIN °C	10,0	bolenza con fenomeni anche violenti come la grandine che
TEMPERATURE MAX °C	28,0	ha colpito duramente anche il perugino. Le precipitazioni
PIOGGIA MAX 24h (mm)	25,0	nel complesso però sono state inferiori alle medie anche
		se non di molto.