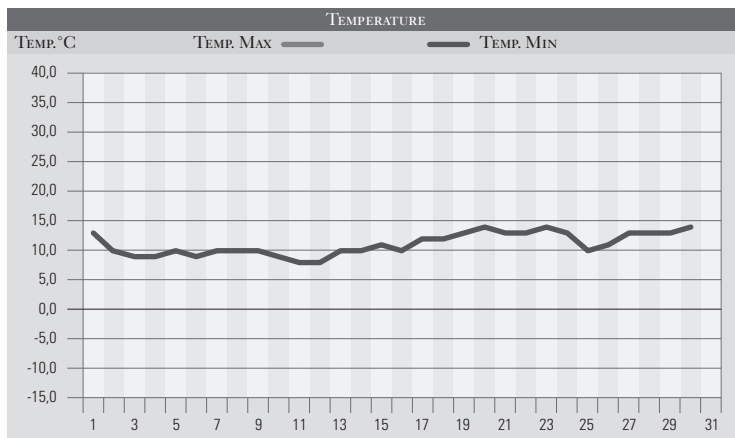


MAGGIO 2006

| GIORNO | T.MIN | T.MAX | PREC.(mm) | OSSERVAZIONI |
|----------|-------|-------|-----------|---|
| 1 | 13,0 | 24,0 | | Poco nuvoloso |
| 2 | 10,0 | 22,0 | | Poco nuvoloso da nord |
| 3 | 9,0 | 22,0 | | Sereno |
| 4 | 9,0 | 21,0 | | Da sereno a poco nuvoloso |
| 5 | 10,0 | 22,0 | | Da sereno a poco nuvoloso |
| 6 | 9,0 | 23,0 | | Da poco nuvoloso a coperto |
| 7 | 10,0 | 24,0 | | Poco nuvoloso, isolati piovaschi |
| 8 | 10,0 | 23,0 | | Nuvoloso, peggioramento, rovesci a nord regione |
| 9 | 10,0 | 13,0 | 5,0 | Temporale, grandine-neve Subasio |
| 10 | 9,0 | 20,0 | | Variabile con piovaschi |
| 11 | 8,0 | 18,0 | 13,0 | Piogge estese, miglioramento il pom. |
| 12 | 8,0 | 23,0 | | Poco nuvoloso |
| 13 | 10,0 | 25,0 | | Sereno |
| 14 | 10,0 | 26,0 | | Sereno |
| 15 | 11,0 | 26,0 | | Sereno |
| 16 | 10,0 | 27,0 | | Sereno |
| 17 | 12,0 | 26,0 | | Sereno |
| 18 | 12,0 | 26,0 | | Poco nuvoloso |
| 19 | 13,0 | 27,0 | | Sereno |
| 20 | 14,0 | 27,0 | | Sereno, vento forte da sud-ovest |
| 21 | 13,0 | 28,0 | | Da sereno a variabile |
| 22 | 13,0 | 29,0 | | Poco nuvoloso, caldo |
| 23 | 14,0 | 31,0 | | Nuvoloso con isolati piovaschi |
| 24 | 13,0 | 22,0 | 1,0 | Variabile, piovaschi con sabbia |
| 25 | 10,0 | 27,0 | | Sereno |
| 26 | 11,0 | 27,0 | | Sereno |
| 27 | 13,0 | 31,0 | | Poco nuvoloso |
| 28 | 13,0 | 30,0 | | Poco nuvoloso |
| 29 | 13,0 | 29,0 | | Poco nuvoloso |
| 30 | 14,0 | 25,0 | | Variabile, forte vento da ovest |
| 31 | | | | Da variabile a nuvoloso la sera |
| MED.TOT. | 11,1 | 24,8 | 19,0 | |



| RIEPILOGO | | | |
|----------------------|------|--|--|
| GIORNI DI PIOGGIA | 3 | Mese con precipitazioni quasi assenti e temperature al di sopra delle medie. | |
| TEMPERATURE MIN °C | 8,0 | | |
| TEMPERATURE MAX °C | 31,0 | | |
| PIOGGIA MAX 24h (mm) | 13,0 | | |