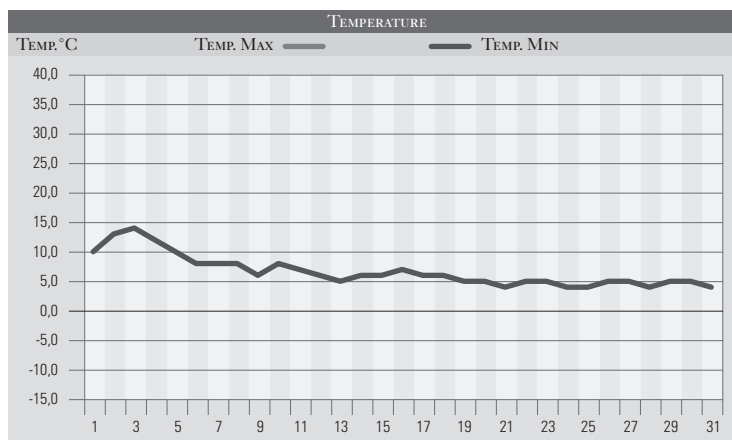


OTTOBRE 1995

GIORNO	T.MIN	T.MAX	PREC.(mm)	OSSERVAZIONI
1	10,0	24,0		Sereno
2	13,0	22,0		Sereno o poco nuvoloso
3	14,0	22,0		Da poco nuvoloso a coperto
4	12,0	21,0		Variabile
5	10,0	20,0		Variabile, miglioramento, alluvione in Liguria
6	8,0	19,0		Poco nuvoloso
7	8,0	20,0		Poco nuvoloso, poi sereno
8	8,0	19,0		Sereno
9	6,0	20,0		Sereno
10	8,0	21,0		Sereno
11	7,0	18,0		Sereno o poco nuvoloso
12	6,0	17,0		Sereno
13	5,0	19,0		Sereno, siccità in aumento
14	6,0	19,0		Sereno o poco nuvoloso
15	6,0	20,0		Sereno
16	7,0	19,0		Sereno o poco nuvoloso
17	6,0	18,0		Sereno, alta pressione in aumento
18	6,0	18,0		Sereno
19	5,0	17,0		Sereno
20	5,0	18,0		Sereno
21	4,0	17,0		Sereno o poco nuvoloso
22	5,0	16,0		Sereno
23	5,0	17,0		Sereno o poco nuvoloso
24	4,0	15,0		Sereno o poco nuvoloso
25	4,0	14,0		Sereno
26	5,0	16,0		Sereno o poco nuvoloso
27	5,0	14,0		Sereno
28	4,0	16,0		Sereno, alta pressione stabile
29	5,0	14,0		Sereno
30	5,0	13,0		Sereno
31	4,0	15,0		Sereno
MED.TOT.	6,6	18,0	0,0	



RIEPILOGO		
GIORNI DI PIOGGIA	0	Mese autunnale insolitamente e completamente siccitoso
TEMPERATURE MIN °C	4,0	con alte pressioni persistenti e totale assenza di perturbazioni atlantiche che sono riuscite ad entrare sul centro Italia.
TEMPERATURE MAX °C	24,0	
PIOGGIA MAX 24h (mm)	0,0	