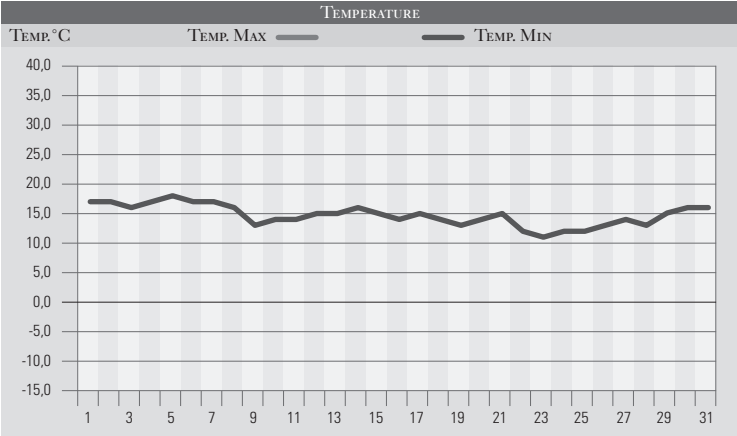


AGOSTO 1995

GIORNO	T.MIN	T.MAX	PREC.(mm)	OSSERVAZIONI
1	17,0	33,0		Poco nuvoloso
2	17,0	34,0		Sereno o poco nuvoloso
3	16,0	33,0		Poco nuvoloso
4	17,0	34,0	5,0	Temporale pomeridiano
5	18,0	33,0		Sereno, caldo
6	17,0	33,0	3,0	Temporale pomeridiano
7	17,0	32,0		Variabile
8	16,0	32,0	20,0	Temporale al pom, esteso al centro e sud della reg.
9	13,0	28,0		Variabile con piovaschi in serata
10	14,0	29,0		Sereno, caldo
11	14,0	28,0		Sereno
12	15,0	29,0		Sereno o poco nuvoloso
13	15,0	30,0		Sereno
14	16,0	30,0		Sereno o poco nuvoloso
15	15,0	28,0	16,0	Temporal estesi a nord-est reg., nubifragio a Pianello
16	14,0	27,0		Variabile, piogge ad est
17	15,0	22,0		Variabile
18	14,0	25,0	13,0	Variabile, piogge sparse in serata
19	13,0	26,0	3,0	Variabile, piogge sparse
20	14,0	28,0		Variabile
21	15,0	23,0	12,0	Temporale forte a Ponte S. Giovanni e P. Valleceppi
22	12,0	26,0		Variabile
23	11,0	24,0		Nuvolosità variabile
24	12,0	25,0		Variabile
25	12,0	27,0	5,0	Variabile con piovaschi in serata
26	13,0	28,0	3,0	Piovaschi sparsi
27	14,0	25,0		Sereno
28	13,0	29,0	15,0	Peggioramento intenso, piogge forti a nord di PG
29	15,0	32,0		Sereno
30	16,0	33,0		Sereno o poco nuvoloso
31	16,0	32,0		Sereno
MED.TOT.	14,7	29,0	95,0	



RIEPILOGO		
GIORNI DI PIOGGIA	10	Mese insolitamente instabile e piovoso, caratterizzato da cieli frequentemente nuvolosi e temporali diffusi, con temperature spesso al di sotto delle medie per quanto riguarda i valori massimi.
TEMPERATURE MIN°C	11,0	
TEMPERATURE MAX°C	34,0	
PIOGGIA MAX 24 H (MM)	20,0	