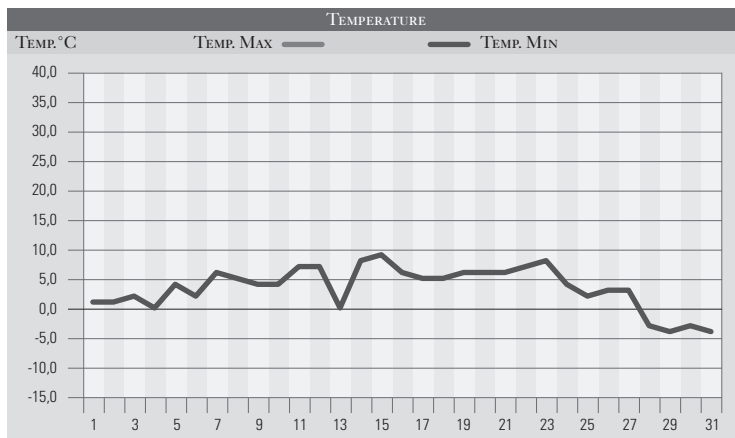


DICEMBRE 1993

GIORNO	T.MIN	T.MAX	PREC.(mm)	OSSERVAZIONI
1	1,0	1,0	4,0	Coperto con piogge sparse, neve/800m
2	1,0	3,0		Variabile
3	2,0	6,0		Poco nuvoloso
4	0,0	8,0		Sereno
5	4,0	6,0		Sereno, nebbia al mattino
6	2,0	7,0		Poco nuvoloso
7	6,0	11,0	5,0	Coperto, piogge sparse anche intense, neve/1500m
8	5,0	10,0	13,0	Coperto con piogge estese, neve/1500m
9	4,0	8,0		Nebbia
10	4,0	9,0		Variabile nebbioso
11	7,0	13,0		Vento forte da sud-ovest, caldo
12	7,0	12,0		Sereno, caldo
13	0,0	10,0		Brina, sereno
14	8,0	12,0	14,0	Piogge estese dalla serata
15	9,0	13,0	13,0	Piogge sparse e rovesci
16	6,0	12,0		Poco nuvoloso
17	5,0	12,0		Variabile
18	5,0	14,0		Nuvolosità Variabile
19	6,0	14,0		Variabile
20	6,0	15,0		Poco nuvoloso
21	6,0	16,0		Variabile
22	7,0	15,0		Molto vento e nuvolosità variabile, caldo
23	8,0	11,0	11,0	Rovesci sparsi e temporali, neve/1500m
24	4,0	6,0	7,0	Coperto, pioggia e raffiche di vento, neve/800m
25	2,0	4,0	12,0	Variabile con piogge in serata, neve/300m
26	3,0	4,0	28,0	Pioggia estesa dalle 11,30, neve/600m
27	3,0	5,0	14,0	Pioggia di notte, neve/500m, sereno al pom
28	-3,0	5,0		Gelate, sereno
29	-4,0	6,0		Gelate estese, sereno
30	-3,0	7,0		Gelate, sereno
31	-4,0	7,0		Gelate estese, sereno
MED.TOT.	3,5	9,1	121,0	



RIEPILOGO			
GIORNI DI PIOGGIA	10	Mese con precipitazioni oltre la media, con prima e terza decade fredde e caratterizzate da precipitazioni anche nevose, non solo in montagna, e seconda decade calda per correnti umide meridionali.	
TEMPERATURE MIN °C	-4,0		
TEMPERATURE MAX °C	16,0		
PIOGGIA MAX 24h (mm)	28,0		