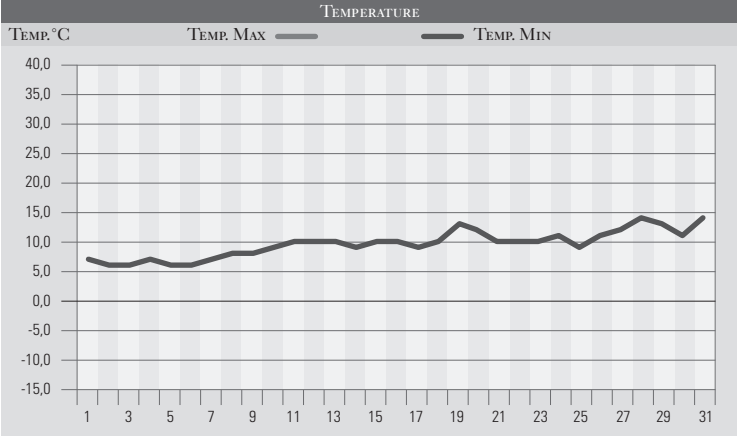


MAGGIO 1992

| GIORNO | T.MIN | T.MAX | PREC.(mm) | OSSERVAZIONI |
|----------|-------|-------|-----------|---|
| 1 | 7,0 | 15,0 | | Poco nuvoloso |
| 2 | 6,0 | 17,0 | | Variabile |
| 3 | 6,0 | 18,0 | | Poco nuvoloso |
| 4 | 7,0 | 17,0 | | Sereno |
| 5 | 6,0 | 18,0 | | Poco nuvoloso |
| 6 | 6,0 | 17,0 | | Sereno |
| 7 | 7,0 | 18,0 | | Sereno o poco nuvoloso |
| 8 | 8,0 | 20,0 | | Sereno |
| 9 | 8,0 | 23,0 | | Sereno, aumento delle temperature |
| 10 | 9,0 | 23,0 | | Sereno |
| 11 | 10,0 | 24,0 | | Sereno o poco nuvoloso |
| 12 | 10,0 | 24,0 | | Sereno, caldo |
| 13 | 10,0 | 23,0 | | Sereno, periodo siccitoso |
| 14 | 9,0 | 22,0 | | Sereno o poco nuvoloso |
| 15 | 10,0 | 24,0 | | Sereno |
| 16 | 10,0 | 23,0 | | Sereno o poco nuvoloso |
| 17 | 9,0 | 22,0 | | Sereno |
| 18 | 10,0 | 24,0 | | Sereno, caldo |
| 19 | 13,0 | 17,0 | 9,0 | Piogge nella mattinata, poi miglioramento |
| 20 | 12,0 | 19,0 | | Sereno |
| 21 | 10,0 | 19,0 | | Sereno, si acuisce la siccità |
| 22 | 10,0 | 20,0 | | Sereno |
| 23 | 10,0 | 21,0 | | Sereno o poco nuvoloso |
| 24 | 11,0 | 22,0 | | Sereno |
| 25 | 9,0 | 22,0 | | Poco nuvoloso |
| 26 | 11,0 | 23,0 | | Sereno |
| 27 | 12,0 | 23,0 | | Sereno o poco nuvoloso |
| 28 | 14,0 | 19,0 | 5,0 | Temporalì sparsi |
| 29 | 13,0 | 21,0 | 1,0 | Piovigginì al pomeriggio |
| 30 | 11,0 | 24,0 | | Nuvolosità variabile |
| 31 | 14,0 | 21,0 | 15,0 | Forte ed esteso temporale |
| MED.TOT. | 9,6 | 20,7 | 30,0 | |



| RIEPILOGO | | |
|----------------------|------|---|
| GIORNI DI PIOGGIA | 4 | Maggio ripropone il problema della siccità in quanto è avaro di precipitazioni e soprattutto caldo e ventoso, correnti che contribuiscono ad aumentare una siccità già grave. |
| TEMPERATURE MIN °C | 6,0 | |
| TEMPERATURE MAX °C | 24,0 | |
| PIOGGIA MAX 24h (mm) | 15,0 | |