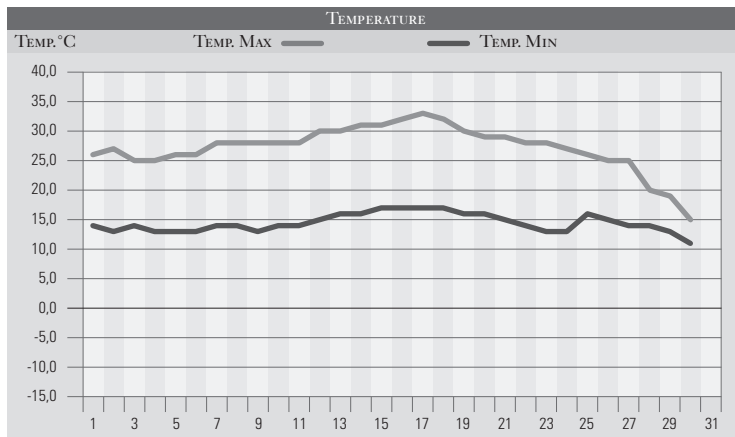


SETTEMBRE 1987

GIORNO	T.MIN	T.MAX	PREC.(mm)	OSSERVAZIONI
1	14,0	26,0		Poco nuvoloso con caldo forte
2	13,0	27,0	1,0	Temporalì al pom. su Gubbio, Gualdo, Foligno, Terni
3	14,0	25,0		Variabile, con qualche piovasco sparso
4	13,0	25,0		Nuvoloso al pom., temporalì sparsi a sud-ovest reg.
5	13,0	26,0		Nebbia la mattina, temporale pom. est-sud-est
6	13,0	26,0	15,0	Pioggie sparse a macchia di leopardo, anche intense
7	14,0	28,0		Sereno con nuvolosità variabile
8	14,0	28,0		Poco nuvoloso
9	13,0	28,0		Sereno o poco nuvoloso
10	14,0	28,0		Poco nuvoloso
11	14,0	28,0		Sereno, caldo
12	15,0	30,0		Sereno
13	16,0	30,0		Sereno o poco nuvoloso
14	16,0	31,0		Sereno
15	17,0	31,0		Sereno, ulteriore aumento delle temp.
16	17,0	32,0		Sereno, caldo
17	17,0	33,0		Sereno
18	17,0	32,0		Sereno caldissimo (Roma 37°C, Atene 37°C)
19	16,0	30,0		Sereno
20	16,0	29,0		Sereno caldo
21	15,0	29,0		Sereno
22	14,0	28,0		Sereno o poco nuvoloso
23	13,0	28,0		Sereno, caldo
24	13,0	27,0	2,0	Peggioramento, debole temporale
25	16,0	26,0		Roveschi sparsi in mattinata
26	15,0	25,0		Nuvolosità variabile
27	14,0	25,0	1,0	Molto nuvoloso con piogge sparse
28	14,0	20,0		Variabile, aria fresca in arrivo
29	13,0	19,0		Poco nuvoloso, anticiclone fresco continentale
30	11,0	15,0		Tramontana, fredda e violenta
31				
MED.TOT.	14,5	27,2	19,0	



RIEPILOGO			
GIORNI DI PIOGGIA	4	Mese siccitoso, con ultima decade fredda e asciutta e prime due decadi calde.	
TEMPERATURE MIN °C	11,0		
TEMPERATURE MAX °C	33,0		
PIOGGIA MAX 24h (MM)	15,0		